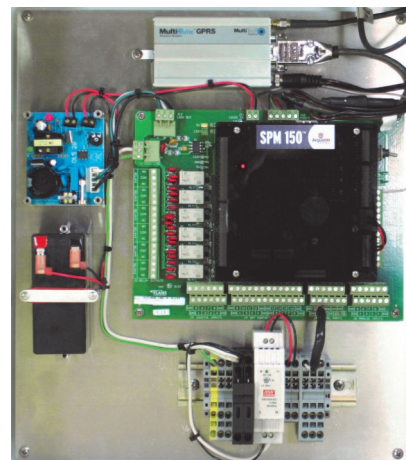


The ArgusON Solar Power Management™ solution is designed to support system owners, system integrators and PPA providers in a single solution offering.

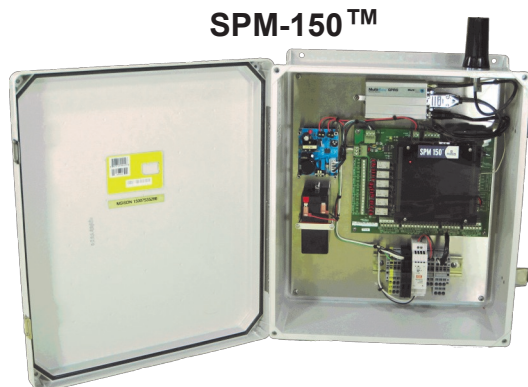
Features

- System performance monitoring
- Data collection and reporting
- Predictive maintenance
- Comprehensive web portal
- Trouble ticket and alarm management system
- Site information and inventory recording



SPM-150™

- Modbus communications interface
- Digital and analog inputs
- Relay outputs
- Battery back-up
- Cellular modem
- Local data storage



SPM-150™

SPM-150™ SM Solar Meter

- Modbus communications interface
- CSI approved Revenue Grade meters
- Indoor and Outdoor Versions



SPM-150™ SM

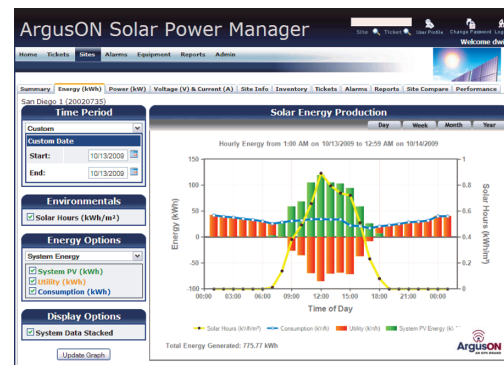
SPM-150™ EM Environmental Module

- Modbus communications or analog interface
- Ambient and panel temperature sensors
- Plane of Array Irradiance meter
- Wind speed and direction sensors

National Operations Center (NOC)

- 24 / 7 / 365 staffed support center
- Monitoring and managing over 26,000 multi-industry sites
- Providing M2M solutions for over 10 years
- Alarm analysis and remote trouble resolution assistance
- Customized alarm escalation procedures
- Continuous site performance assessment

Management Web Portal



Arguson SPM™ Specifications

SPM-150™ Specifications	
PART NUMBER	F1150000
FORM C RELAY OUTPUTS	6
4-20MA ANALOG INPUTS	4
0-5 VDC INPUTS	6
MODBUS INTERFACE	RS-485
CELLULAR COMMUNICATIONS	GPRS, CDMA
POWER SUPPLY INPUT VOLTAGE	120VAC
POWER SUPPLY INPUT CURRENT	0.5 A
OPERATING TEMPERATURE RANGE	-40 to 70C
BATTERY BACK-UP	Yes
ON-BOARD DATA STORAGE	16MB
DATA STORAGE EXPANSION	128MB
ENCLOSURE	NEMA 4x
DIMENSIONS	12.76" W x 15.50" H x 6.60" D

SPM-150™ SM Solar Meter Specifications	
PART NUMBER INDOOR / OUTDOOR	F1150002 / F1150001
ENERGY METERING ACCURACY	0.2%
CT SECONDARY NOMINAL CURRENT	5 Amp
OPERATING TEMPERATURE RANGE	-20 to 70C
POWER SUPPLY INPUT VOLTAGE	90 to 260 VAC
ENCLOSURE	NEMA 4x
DIMENSIONS	13.5" W x 10.75" H x 6.5" D

SPM-150™ EM Environmental Module Specifications	
PART NUMBER	F1150005
RESOLUTION	16 bit
TEMPERATURE SENSOR TYPE	Type T
OPERATING TEMPERATURE RANGE	-10 to 70C
POWER SUPPLY INPUT	24VDC
ENCLOSURE	NEMA 4x
DIMENSIONS	8.5" W x 11" H x 3.5" D



332 Nichol Mill Lane • Franklin, TN 37067
866-459-4102 • www.arguson.com

Product specifications subject to change without notice